

Kilowatt

A supplement to Oklahoma Living

INSIDE

Posting signs on power poles creates safety hazards. **PAGE 2**

Install a geothermal heat pump at half the cost! **PAGE 3**

Replacing utility poles ensures improved service and safety. **PAGE 4**



Kiwash Electric Cooperative
PO Box 100 • 120 West 1st Street
Cordell, Oklahoma 73632

tele: **(888) 832-3362**
www.kiwash.coop

OFFICE HOURS:
Monday-Friday, 7:30 am - 5:30 pm.

POWER OUTAGE HOT LINE
888-832-3362

BOARD OF TRUSTEES

Jack Sawatzky, *President*

Robert Travis, *Vice President*

John Schaufele, *Secretary Treasurer*

Rex Eagan, *Asst. Secretary Treasurer*

Jevon West

Marvin Hankins

Dennis Krueger, *General Manager*

PAYMENT OPTIONS

- Pay online at **www.kiwash.coop**.
- Pay by phone by calling **855-875-7216**. Available 24 hours a day. Visa or Mastercard.
- Pay in person at 120 West 1st St., Cordell, Monday - Friday, 7:30 am to 5:30 pm.
- Pay via automatic draft of your checking or savings account. To sign up, please visit **www.kiwash.coop** or call **888-832-3362**.
- Pay at one of our authorized payment locations:

Custer City Hall
Custer City, Oklahoma

First National Bank
Thomas, Oklahoma



Trustees Appointed for CKenergy Co-op

Three districts will encompass former Kiwash service territory.

Beginning January 1, 2016, the Kiwash Electric Cooperative (KEC) membership will see familiar faces leading their new co-op. Three Kiwash Electric trustees, appointed by the existing KEC board, will continue their service on the board of CKenergy Cooperative.

The length of each trustee's term of office is based on the time remaining in their previous term as a Kiwash Electric trustee. When a trustee's term of office expires, that district will hold an election to elect their trustee. District elections typically take place in July. "Democracy works properly only when members participate; so we always encourage members to attend these meetings," said Dennis Krueger, Kiwash general manager.



Robert Travis

John Schaufele

Jack Sawatzky

CKenergy district boundaries will be officially adopted in January, Krueger added. The new districts and trustees are as follows:

Robert Travis, District #10. Travis will serve as District 10 trustee until the official district election in 2016. The official term of office is three years.

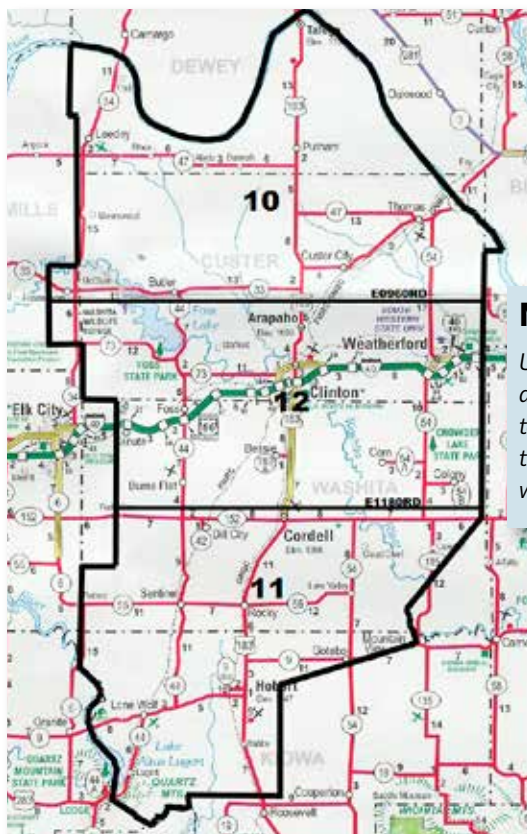
John Schaufele, District #11. Schaufele will represent District 11 until the official district meeting in 2017. The term of office is three years.

New District Map

Under the consolidation agreement, Kiwash Electric territory will be divided into three voting districts. CKenergy will adopt the new district

Jack Sawatzky, District #12. Sawatzky will represent District 12 until the official district meeting and election in 2018. The term of office is three years.

Commenting on the latest developments in consolidation process Krueger said, "History is being made on January 1. In the 77 year history of electric cooperatives in Oklahoma, this will be the first consolidation of two similarly-minded electric cooperatives. The name will change to CKenergy Electric Cooperative, Inc., but the cooperative mission remains the same."



Say Goodbye To Long Days



Long days are officially over on November 1. That date marks the official ending of Daylight Savings Time, which means we set our clocks back by one hour, and darkness arrives earlier.

If you find yourself fumbling in the dark as you return home in the evening, consider installing a high pressure sodium security light from Kiwash Electric. Available for a small monthly fee, the lights help illuminate your property, making it safer for you and less attractive to thieves. Furthermore, your co-op will install and maintain the light so you don't have to worry about it.

For details on security lights, please visit www.kiwash.coop or call your co-op at 888-832-3362.

Flu Shots For Less!



Sneeze and sniffle season is almost here, so now is the time to prepare yourself by getting a flu shot. Use your Co-op Connections card to receive a discount on flu shots at any participating pharmacy including CVS, Walgreen's, Rite Aid, Target and more. Remember, discounts are good for your entire family.

To receive the discount, simply present your card at checkout. Ask the pharmacist to calculate the discounted price. If you have insurance, ask the pharmacist to compare the discount price to your insurance price so you can select the best deal.

To locate providers in your area, go to www.connections.coop/healthy-savings and click "Locate Providers," or call 800-800-7616.

BY DENNIS KRUEGER

GENERAL MANAGER

Signs Don't Belong on Poles

And please, no hay in the right of way.

Power line poles may seem like an inviting place to post your garage sale signs or a campaign sign promoting your favorite candidate. PLEASE DON'T. It is not only against regulations to do so, but such attachments also create dangerous conditions for Kiwash Electric linemen.

The National Electrical Safety Code states that no item shall be attached to utility poles without approval from the owner/operator of the electric system. That's Kiwash, and we are NOT giving anyone permission.

"The National Electrical Safety Code states that no item shall be attached to utility poles without approval from the owner/operator of the electric system. That's Kiwash, and we are NOT giving anyone permission."

You may be thinking, "What's the harm of putting up one sign?" What you may not realize is the nails, tacks and screws that remain in the pole after the sign has been discarded present a dangerous climbing hazard for our linemen. Working on or near power lines is dangerous enough without added hazards. These sharp objects can tear the rubber gear that protects linemen from electrical shocks and burns. When working around lethal voltages, it only takes a pinhole in a protective rubber glove or sleeve to let in enough electricity to kill or seriously injure someone working on an energized power line.

Kiwash Electric Cooperative's poles also should not be used to hang or attach fences, gates, mailboxes, basketball hoops or similar objects. These create climbing obstacles and safety hazard for our crews. A portion of our mission is to provide safe electricity for our members and our employees. You can help by not placing signs, fences or any other items on our poles.



No Hay in Right of Way

Good spring rains have led to great summer growing conditions. In fact, it's been one of the better years for summer crops, in my opinion. A lot of bales of hay, grain sorghum (milo), and alfalfa are coming off the fields this fall. Some of these bales are shipped to other parts of the state while others remain ready to feed livestock this winter.

Please heed our warning. There is an easement under every electric line and that easement is off-limits for stacking or storing bales of hay. Kiwash is not responsible for bales stored in this manner; the farmer or rancher is taking that risk themselves. Lightning, wind storms, birds, and occasionally other creatures may fall on our lines and start a fire. We are not responsible for hay bales that might fall victim to such an event.

Our name might be changing to CKenergy Electric Cooperative, but our commitment to safe electricity will not be altered in any manner. Please use common sense on all electrical safety issues, including the ones listed above. We appreciate your cooperation on these matters and enjoy a safe Thanksgiving holiday!

You Can Afford To "Go Geo"

After January 1, CKenergy members can install a geothermal heat pump at nearly half the cost.

Everyone knows that geothermal heat pumps save you plenty of money, but the cost to "go geo" can be prohibitive for many homeowners. After January 1, that problem may no longer be an issue for Kiwash Electric members, who can take advantage of an innovative geothermal program offered by their "new" electric co-op, CKenergy.

CKenergy's geothermal loop program reduces geothermal installation costs by as much as 50 percent by eliminating the upfront cost of installing ground loops. Under the geothermal loop program, CKenergy Cooperative will install and maintain the loops for a small monthly thermal energy fee of \$15-\$25, depending on the cost of the loop.

Members who participate in the program also receive an additional cash rebate of \$650 per ton on geothermal heat pumps with hot water

generation, or \$450 per ton without hot water generation. To further sweeten the deal, participating members will qualify for a special load control rate, which offers an annual savings of roughly 10 percent over standard residential rates.

That's not all: Through December 31, 2016, homeowners who install an Energy Star-certified geothermal heat pump are also eligible for a 30 percent federal energy tax credit.

All of these advantages add up to drastically reduced costs on geothermal heat pumps for co-op members—and that's not counting the monthly savings they will enjoy on their electric bill. According to Energy.gov, geothermal heat pumps typically use 25 to 50 percent less electricity than conventional heating or cooling systems.

Energy Efficiency

Tip of the Month



Reduce energy for water heating. Take simple steps like lowering your heater's temperature and installing low-flow shower heads to reduce your water heating bills.

Source: Energy.gov

Add Up The Savings!

CKenergy's geothermal loop program makes it easier for co-op members to afford a geothermal heat pump. Just look at the benefits:



- ✓ **Cost of the group loops paid by CKenergy**
- ✓ **CKenergy heat pump rebate pays from \$450 to \$650 per ton**
- ✓ **30 percent federal energy tax credit available on geothermal heat pumps until December 31, 2016**
- ✓ **Estimated 25 to 50 percent reduction in electricity use.**

The energy savings coupled with the reduced upfront costs, make "going geo" a real option for co-op members.

If you have questions about the CKenergy geothermal loop program, please contact Boyd Lee at 405-656-9135 or visit www.caddoelectric.coop and click on Energy Sense.

Recipes

Easy Corn Pudding

INGREDIENTS

- 1 (15 oz) can creamed corn
- 1 (15.25 oz) can whole kernel corn
- 1/4 pound butter, softened
- 1 (8.5 oz) package corn bread mix
- 1 (8 oz container) sour cream



DIRECTIONS

Preheat oven to 350 degrees F (175 degrees C). Put butter in 2 quart casserole dish, place in oven until melted.

Remove casserole dish and add creamed corn, kernel corn, corn muffin mix and sour cream. Mix well, bake uncovered approximately 30 minutes. Makes 6 servings.

SOURCE: ALLRECIPES.COM

Why Your Electric Co-op Replaces Utility Poles

You probably don't pay much attention to the utility poles found throughout Kiwash Electric's service territory, but did you know these tall structures are the backbone of our distribution network?

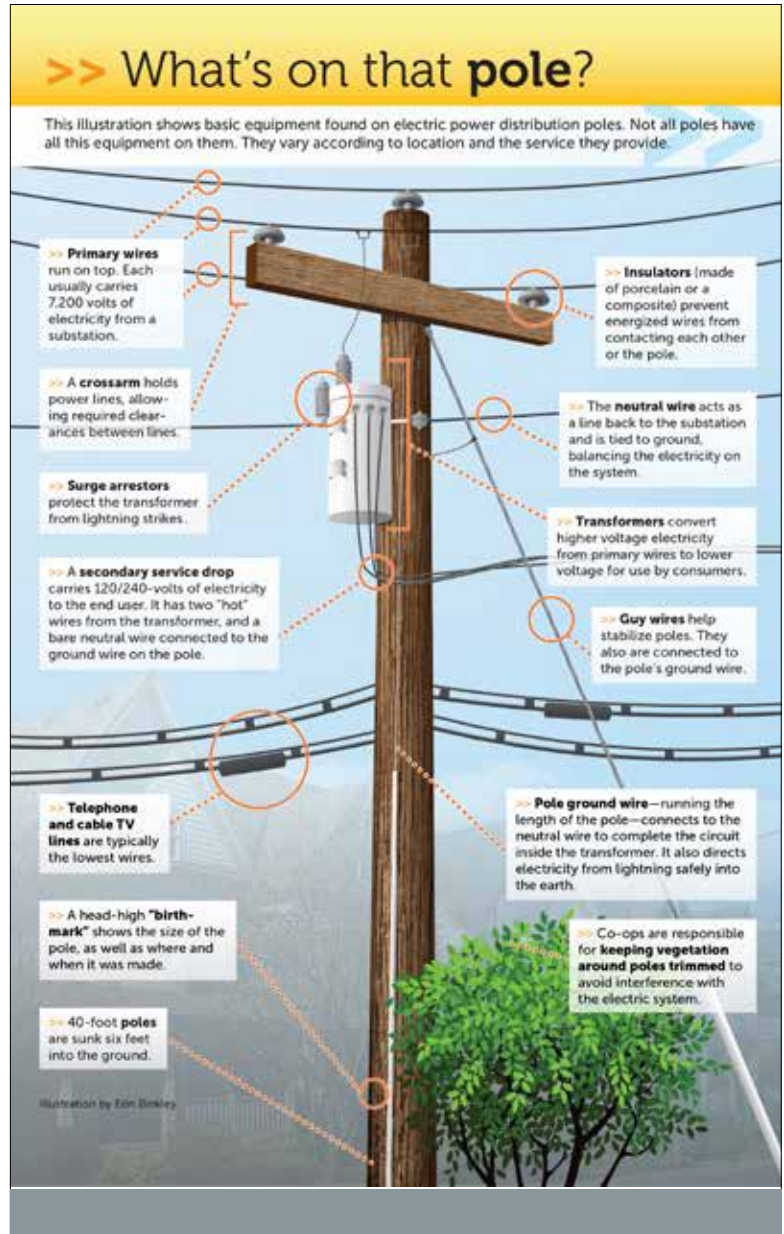
Strong, sturdy utility poles ensure a reliable electric system, which is why we routinely inspect the thousands of poles found on our lines. Throughout the year, Kiwash crews check poles for decay caused by exposure to the elements. They know which poles are oldest and conduct inspections through a rotational process. Typically, a standard wooden distribution pole is expected to last more than 50 years.

Occasionally, poles need to be replaced for other reasons besides decay and old age. Weather disasters, power line relocation and damage caused by farm equipment are potential causes for immediate replacement. When possible, Kiwash Electric communicates when and where pole replacements will take place so that you stay informed of where crews will be working.

Here is a quick breakdown of how crews replace a utility pole:

When a pole needs to be replaced, crews will start the process by digging a hole, typically next to the pole being replaced. The depth of the hole must be 15 percent of the new pole's height. Next, the new pole must be fitted with bolts, cross arms, insulators, ground wires and arm braces – all of the necessary parts for delivering safe and reliable electricity. Then, crews safely detach the power lines from the old pole. The new pole is then raised and guided carefully into position, and the lines are attached, leaving the new pole to do its job.

So, the next time you come across your co-op crew replacing a pole, use caution and know that this process ensures a more reliable electric system for you, our members.



KEC Holiday Hours
 Kiwash Electric will close
 November 26-27 for the
 Thanksgiving holiday. To report a
 service problem during this time,
 please call **888-832-3362**.

HAPPY Thanksgiving

FROM ALL YOUR FRIENDS AT KIWASH ELECTRIC COOPERATIVE