

# the Kilowatt

FEBRUARY 2012



published monthly for members of  
Kiwash Electric Cooperative, Inc.

A SUPPLEMENT TO OKLAHOMA LIVING

## Be our friend

Kiwash Electric Cooperative posts news and updates on Facebook. Be our Facebook friend, and stay informed about co-op people, programs, even power outages!



## ENERGY EFFICIENCY

### Tip of the Month

Inspect your foundation for potential air-infiltration points. Fixing these leaks makes a bigger impact on your electric bill than sealing doors and windows! Caulk all cracks and gaps around your home including spaces around wires for telephone, electrical, cable, and gas lines, water spigots, and dryer vents. Find more ways to save at [TogetherWeSave.com](http://TogetherWeSave.com).

—Touchstone Energy® Cooperatives

College-bound teens take note: that cellphone video camera could help you attain your education goals. At the least, it might ease the burden of tuition costs at your choice of college, university or technical school.

How so? Kiwash Electric is offering \$500 scholarships to four graduating seniors who produce the best short video commercial on the topic "My Electric Cooperative."

Don't fret if producing a video seems too daunting: Kiwash Electric gives applicants the option to write an essay instead.

Past co-op scholarship contests have offered the essay option only, but Kiwash Scholarship Coordinator Lisa Willard says they decided to offer the video category to "liven things up."

Videos must be one to three minutes in length, and cannot contain copyrighted music without

## Make a video. Win a COLLEGE SCHOLARSHIP!



permission from the copyright holder. Inappropriate or obscene content will be rejected.

Essays and video uploads, along with applications, will be accepted until April 15, 2012 at 5 pm. Applicants must be high school

seniors whose parents are members of Kiwash Electric Cooperative. Complete rules and guidelines for the essay and video contest are available online at [www.kiwash.coop](http://www.kiwash.coop), or contact Lisa Willard at **888-832-3362**.



## BILL PAYMENT LOCATIONS

Kiwash Electric  
120 W. 1st Street  
Cordell, Oklahoma

Pay online:  
[www.kiwash.coop](http://www.kiwash.coop)

Custer City Hall  
Custer City, Oklahoma

First National Bank  
Thomas, Oklahoma



## meet our MINI MEMBERS

Share pictures of your "mini members" in the *Kiwash Kilowatt*. The theme for March is "March Showers." Please send photos by February 13, 2012 to Mini Members, Kiwash Electric Cooperative, 120 W. 1st Street, Cordell, OK 73632, or email images to [lwillard@kiwash.coop](mailto:lwillard@kiwash.coop). Please include your name, phone number, children's names, parent's names, and hometown. If possible provide a few details about the photo. Sorry, images cannot be returned.

◀ Emiley, Hailey and Brady Kauk, children of Gregg and Rebecca Kauk, Arapaho, along with pups Beau and Duffy.

MORE PHOTOS INSIDE ▶



A Touchstone Energy  
Cooperative

KIWASH ELECTRIC  
COOPERATIVE, INC.

*Providing the service  
that lights up your life.*

**Office Location**

PO Box 100  
120 W. 1st Street  
Cordell, Oklahoma

(888) 832-3362  
[www.kiwash.coop](http://www.kiwash.coop)

 Find us  
on Facebook

**STAFF**

Dennis Krueger  
MANAGER

Gene Smith  
DIRECTOR OF  
FINANCE

Lisa Willard  
DIRECTOR OF  
COMMUNICATIONS

Roy Dewees  
DIRECTOR OF  
OPERATIONS

**BOARD OF TRUSTEES**

**OFFICERS**

Jack Sawatzky  
PRESIDENT

Robert Travis  
VICE PRESIDENT

Virginia Walker  
SEC.-TREASURER

John Schaufele  
ASST. SEC.-TREASURER

**DIRECTORS**

Ralph Cunningham  
Leslie Hinds  
Rex Eagan

INSIDE YOUR CO-OP



By Dennis Krueger  
GENERAL MANAGER

# Who's on first?

## How utilities restore power after an outage

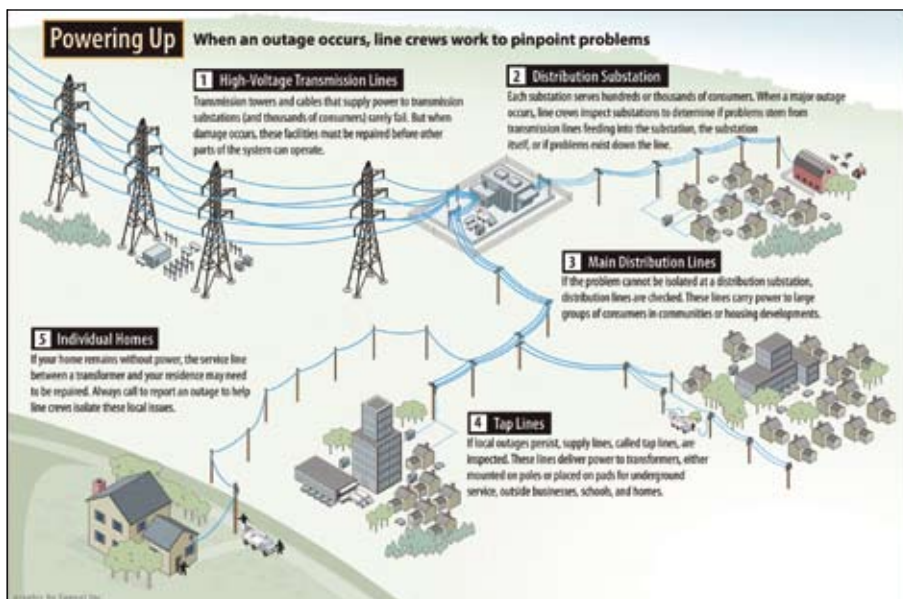
When your power goes off there's only one thing you really want—your power back on! Maybe there's a tree in the line leading to your house, or maybe you saw lightening hit your transformer. You're thinking "Why don't the co-op linemen just come on out and fix the problem?" But it doesn't work that way. Down the line there may be other problems that must be fixed before your power is restored. Just like putting a puzzle together, there is a natural sequence to repairing outage problems.

In the wake of a storm, restoring electrical power is often a complicated process. The damage done by wind, ice and other bad weather usually occurs at several points in the distribution system. The idea is to get the power back on for everyone in the most efficient and safest manner.

In the office, dispatchers and operations personnel assess the damage and determine which crews, and how many crews, need to be dispatched.

If we are aware of a public safety problem—such as wires blocking roads or live wires on the ground—we send our crews to those locations first.

The first location line crews check is the substation. A substation is the power source for a particular geographic area. Sometimes service to several hundred or thousand customers can be restored immediately by replacing a fuse on a



substation transformer.

The linemen work their way out along the main distribution line running from the substation. These are the lines you see along the roadways with three wires resting on a cross arm. These are the main arteries of our systems. Main feeder lines must be repaired before working on tap lines and individual services. Fixing the individual home problems is useless if the main line is dead. No electricity would flow into the house and other consumers would be without power longer.

The diagram above shows the progression of restoring power. After checking and repairing any problems at the substation, the next step is repairing the main distribution line between the substation and the outage location.

There are many variables that can determine the order in which power

is restored. For example, a single-phase distribution line that runs from a factory may have a fuse that cuts power to other locations down the line. At one of these locations, perhaps a tree must be removed so the fuse can be reset, which would restore service to the factory. Maybe the last home on the line has damage on the line leading directly to the house. Repairing the damage to that home first would not restore their electric service and it would only delay the restoration of service to many other people.

The next time your power is out and you see the line crew drive by, please remember they've got to restore service elsewhere first, so that your service can be restored. It may not seem like it, but there is a predetermined plan to restoring service to the largest number of people in the quickest time possible.



### A FEW THINGS YOU SHOULD KNOW ABOUT....

**Youth Tour contest coming up.** Teens interested in participating in the Rural Electric Youth Tour in Washington D.C. will have an opportunity to review materials before they take the Youth Tour quiz. Youth Tour packets will be delivered to high schools in January and February. High school juniors are eligible to participate. For more details, please visit [www.kiwash.coop](http://www.kiwash.coop) or contact Lisa Willard at **888-832-3362**

**YouthPower Energy Camp for eighth graders** is the perfect opportunity for young teens to learn positive leadership skills and increase their understanding of cooperative principles in a fun environment. Energy Camp will be held May 29 - June 1, 2012 at Camp Hinton. Eighth graders in Kiwash Electric territory are encouraged to team up with a friend and write a brief essay of 100 words or more on the topic, "What I would miss most without electricity and why." Kiwash Electric will select one team (two teens) to attend Energy Camp. For more details please contact Lisa Willard at **888-832-3362** or visit [www.kiwash.coop](http://www.kiwash.coop).

**Observing the 10-foot rule** when you are working near power lines could keep you and others you are working with from suffering a tragic accident. The 10 foot rule refers to the distance extending ten feet in every direction from any power line. When you are outside working, make sure you keep yourself and any equipment you are working with—cranes, forklifts, backhoes, dump trucks, ladders, antennas, etc.—at least ten feet from power lines. If you are unsure about working near power lines or have questions about the safety risks involved, please don't hesitate to contact your electric cooperative at **888-832-3362**. We take safety matters—and safety questions—very seriously.

### meet our MINI MEMBERS



*Jasi Froneberger and her dog Stormy. Jasi is the granddaughter of Scott and Cindy Froneberger of Cordell.*



*McKenna Wedel and Maddie. McKenna is the daughter of Greg and Karla Wedel of Cordell.*

## Recipe Box

### White Chocolate Raspberry Cheesecake



#### INGREDIENTS

- 1 cup chocolate cookie crumbs
- 3 tablespoons white sugar
- 1/4 cup butter, melted
- 1 (10 ounce) package frozen raspberries
- 2 tablespoons white sugar
- 2 teaspoons cornstarch
- 1/2 cup water
- 2 cups white chocolate chips
- 1/2 cup half-and-half cream
- 3 (8 ounce) packages cream cheese, softened
- 1/2 cup white sugar
- 3 eggs
- 1 teaspoon vanilla extract

#### DIRECTIONS

In a medium bowl, mix together cookie crumbs, 3 tablespoons sugar, and melted butter. Press mixture into the bottom of a 9 inch springform pan.

In a saucepan, combine raspberries, 2 tablespoons sugar, cornstarch, and water. Bring to boil, and continue boiling 5 minutes, or until sauce is thick. Strain sauce through a mesh strainer to remove seeds.

Preheat oven to 325°F. In a metal bowl over a pan of simmering water, melt white chocolate chips with half-and-half, stirring occasionally until smooth.

In a large bowl, mix together cream cheese and 1/2 cup sugar until smooth. Beat in eggs one at a time. Blend in vanilla and melted white chocolate. Pour half of batter over crust. Spoon 3 tablespoons raspberry sauce over batter. Pour remaining cheesecake batter into pan, and again spoon 3 tablespoons raspberry sauce over the top. Swirl batter with the tip of a knife to create a marbled effect.

Bake for 55 to 60 minutes, or until filling is set. Cool, cover with plastic wrap, and refrigerate for 8 hours before removing from pan. Serve with remaining raspberry sauce.

Yield: 8 servings.

# Connect with new benefits

*Cash rewards, new health discounts and more*

**T**he new year welcomes several exciting new benefits from Co-op Connections. One of the major changes is the new My VIP Savings program, which gives co-op members the chance to earn cash back on many online purchases.

To participate, members must go to the Co-op Connections homepage, [www.connections.coop](http://www.connections.coop), and click on one of the My VIP Savings links. First-time users will be prompted to establish an account, and then it's on to shop at more than 1,000 merchants, including Apple, Best Buy and Wal-Mart.

Members must enter a company's website through the My VIP Savings link to earn rebates, the amounts of which vary by merchant. A member can request a check once he or she earns a minimum of \$25 in cash back rewards.

Another new development is the Healthy Savings Discount program, offering discounts for chiropractic, dental and vision care, as well as lab work and hearing aids.

"We felt the dental benefit was the perfect program to add to the Co-op Connections Card," said Kenda Hoffman, vice president, client benefits, at New Benefits, Touchstone Energy's strategic partner. She cited a recent report that nearly one in three Americans lacks dental insurance.

Humana Dental Access offers discounts of up to 40 percent on most services at some 100,000 providers nationwide.



- **Earn cash back via VIP Savings Plan**
- **Discounts on chiropractic, dental and vision care**
- **Discounts on lab work and hearing aids**
- **Save on eyeglasses, contact lenses and eye surgery**

Coast to Coast Vision will enable co-op members to save on eyewear at national chains including LensCrafters and Target. There are also discounts for contact lenses and laser eye surgery.

"If a member has vision insurance they can use that insurance until it's exhausted, and then use the discount," Hoffman said.

To take advantage of the new benefits, co-op members will need to show their providers a new card. Until new plastic cards can be issued, members are urged to download the new Healthy Savings discount card at <http://www.nbdrugcard.com/touchstone/>.



The German Feast and Auction in Corn on February 4 features handmade quilts, above, authentic German food, farm supplies, crafts and more.

## COMING UP

*in Kiwash Country*

### ■ FEBRUARY

- 4 German Feast and Auction  
208 N. Reimer, Corn
- 4-5 Quartz Mountain Eagle Watch  
Quartz Mountain Nature Park Group  
Camp, Lone Wolf, 580-563-2238  
or 405-319-8380
- 9-10 SWOSU Jazz Festival, Weatherford  
580-774-3063 or 580-774-3708
- 14 St. Valentine's Day
- 15 Cordell Chamber Breakfast, 7:15 am  
Cordell Memorial Hospital
- 26-28 Kiowa County Junior Livestock Show  
580-726-2553

### ■ MARCH

- 17 St. Patrick's Day
- 21 Cordell Chamber Breakfast, 7:15 am  
Sunshine Cafe

### SUBMISSION DETAILS:

Kiwash Electric Cooperative promotes local festivals, rodeos, fairs and other events in our monthly newsletter, the *Kilowatt*. Calendar listings are free.



Please send details to: Lisa Willard, Kiwash Electric, PO Box 100, Cordell, OK 73632, or send e-mail to: [lwillard@kiwash.coop](mailto:lwillard@kiwash.coop). Please send event listings by the 10th of the month prior to publication.

If you have questions about submitting an event, or need to speak with a Kiwash representative about other matters, please call **888-832-3362**, or visit [www.kiwash.coop](http://www.kiwash.coop).

## Get smart. Download the Connections App.

The new Co-op Connections smart phone app helps you find deals from pharmacies and a host of regional, online, and national retailers! Use The new GPS feature even maps all the deals in your immediate area. To download the app for iPod, iPhone or iPod Touch, go to the iTunes Store and enter "Co-op Connections" in the search box. The Droid version is also available now in the Android Market.

