



Your Touchstone Energy® Partner

Got a suggestion for a story in a future issue of Kilowatt?

Call Lisa at 1-888-832-3362



KILOWATT

Published Monthly for the members of
Kiwash Electric Cooperative, Inc.

P.O. Box 100
Cordell, Oklahoma
www.kiwash.coop

Dennis Krueger, Manager
Mark Wesner, Attorney

Editor: Lisa Willard

BOARD OF TRUSTEES

Ralph CunninghamPresident
Stan FunkhouserVice President
Jack SawatzkySecretary/Treasurer
Rex EaganAsst. Secretary/Treasurer

Directors

Jonathan Bartel Louis Fariss
Leslie Hinds Robert Travis
Virginia Walker

KEC taxes support Schools! KEC Taxes Add Up!

KEC & WFEC 2006 Taxes Paid

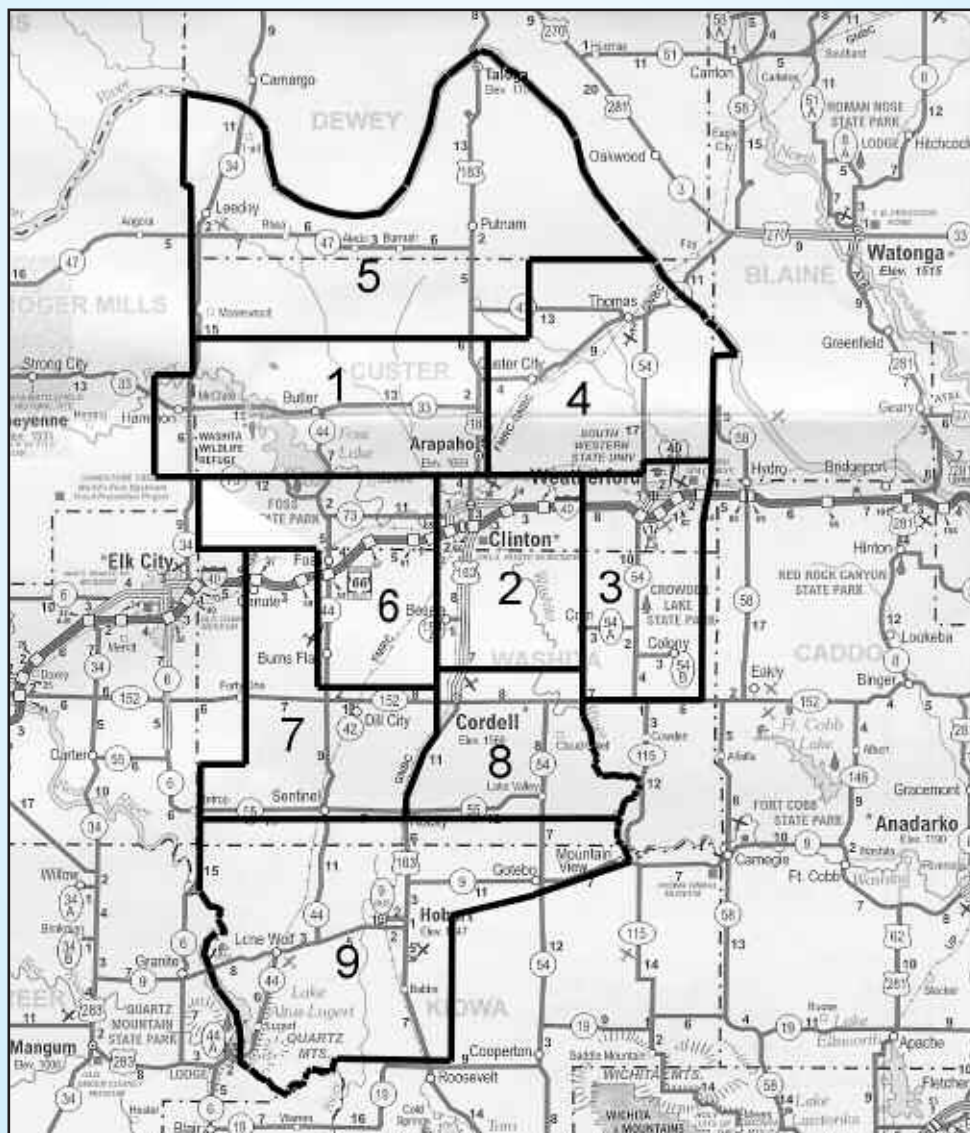
School	Tax amount
Arapaho	\$52,431.81
Burns Flat	22,980.23
Butler	40,241.74
Canute	20,671.00
Clinton	51,841.29
Cordell	58,772.73
Hammon	44,372.51
Hobart	45,344.82
Leedey	68,177.93
Lone Wolf	34,321.49
Mt. View-Gotebo	61,409.67
Sentinel	44,682.43
Snyder	8,379.95
Taloga Oakwood	43,366.15
Thomas-Fay-Custer	72,291.33
Weatherford	43,715.11
Washita Heights	5,602.45

Total Amount Paid to Schools - \$71,8602.28

The dollars add up. Each year, Kiwash Electric Cooperative as well as KEC's power supplier, Western Farmers Electric Cooperative (WFEC) pay gross receipts tax to the Oklahoma Corporation Commission. 95% of taxes collected are remitted to area schools based on the miles of power lines located within each school district. The state keeps the other 5%. In 2006, KEC and Western Farmers Electric Cooperative paid a total of \$572,608.22 to area schools.

Redistricting

Recently, the board reviewed the composition of the nine districts. If inequalities in representation have developed, the board will elect to correct the inequalities so that each district contains as nearly as possible the same number of members. The board of directors elected to redistrict so that each district will contain as nearly as possible the same number of members. Below is picture of the territory divided into nine districts. Each district is represented by one trustee.



COLONY ANNOUNCES GOOBERFEST 2007

The 2007 Gooberfest will be held Saturday, October 6, from 9:00 am to 4:00 pm at and surrounding Kauger Park in downtown Colony, Oklahoma.

The annual Gooberfest is sponsored by the Town of Colony in cooperation with Southwest Oklahoma State University (SWOSU).

The University's Gallery of the Plains Indian will be open with fine art items by Native American, student, and other Oklahoma artists. Paintings, ceramics, sculptural pieces, and other works will be on display and available for purchase.

SWOSU will also provide a moonwalk and kids' booth for younger visitors (and for those who are still young at heart). Students from the School of Pharmacy will be on hand to perform free blood pressure tests.

Food and craft vendors will offer a selection of products to feed visitors, to stock their cupboards, or to spark their gift-giving and home decor instincts. At 1:00 pm the Town will host an auction of goods and services donated by cooperating businesses and individuals. The auction will also feature a wide selection of delectables prepared by local bakers and confectioners. Auction proceeds benefit activities of the Town of Colony.

Coincidentally, the nearby Town of Corn has scheduled its community-wide garage sale for the same day. Bargain and collectibles shoppers will find this another reason to visit northeast Washita County on Saturday, October 6.

(For additional information, to secure booth space, or to donate items for the auction, contact Dwayne Payne at 405-545-0140 or Belle Smith at 405-929-7210.)

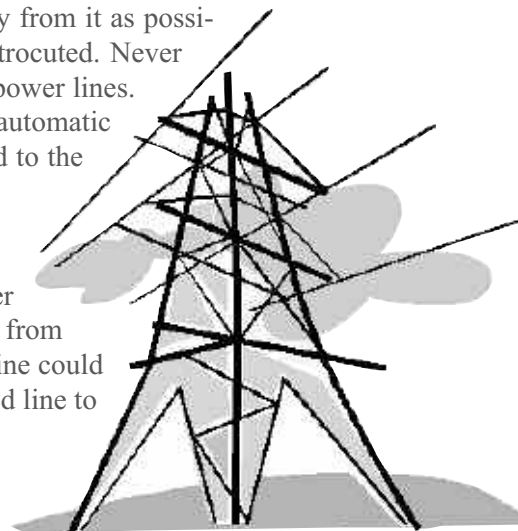
Electrical Safety

STAY AWAY FROM DOWNED POWER LINES AND BROKEN POLES!

No matter how well Kiwash Electric Cooperative is prepared, we cannot avoid occasional downed power lines. Weather conditions and accidents are the main causes of downed power lines. If you come across a downed power line or broken pole, you should stay as far away from it as possible. Treat all downed wires as if they are "live" and you could be electrocuted. Never attempt to touch or move a downed power line or to remove trees from power lines. Remember even a "dead" line may be re-energized unexpectedly by automatic equipment. All downed power lines and broken poles should be reported to the Cooperative immediately.

We will send someone out to make sure the line is de-energized, repair it and restore power as quickly as possible. If the wire belongs to another utility company we will notify them of the problem. Please stay away from downed lines even if you know they are not electric lines. The downed line could have come in contact with an electric line when it fell causing the downed line to be hot.

Electricity is a powerful force in all our lives. It makes so many things possible, and is so ever present in our homes, at work and at play. We often take it for granted. But because it is so powerful, it's important that we always exercise caution when using it.



Cheesy Shell Lasagna

1-1/2 pounds lean ground beef
2 medium onions, chopped
1 garlic clove, minced
1 can (14-1/2 ounces) diced tomatoes
1 jar (14 ounces) meatless spaghetti sauce
1 can (4 ounces) mushroom stems and pieces, undrained
8 ounces uncooked small shell pasta
2 cups (16 ounces) reduced-fat sour cream
11 slices (8 ounces) reduced-fat provolone cheese
1 cup (4 ounces) shredded part-skim mozzarella



In a nonstick skillet, cook the beef, onions and garlic over medium heat until meat is no longer pink; drain. Stir in the tomatoes, spaghetti sauce and mushrooms. Bring to a boil. Reduce heat; simmer, uncovered, for 20 minutes.

Meanwhile, cook pasta according to package directions; drain.

Place half of the pasta in an ungreased 13-in. x 9-in. x 2-in. baking dish. Top with half of the meat sauce, sour cream and provolone cheese. Repeat layers. Sprinkle with mozzarella cheese.

Cover and bake at 350° for 35-40 minutes longer or until the cheese begins to brown. Let stand for 10 minutes before cutting. **Yield:** 12 servings

BULLETIN BOARD

What's Happening In Your Community

October 6 -Fall Fest at Turkey Creek Farm (Butler, OK) - October 6th

October 26 – Western Oklahoma Christian School
Hamburger Fry at the Frisco Center. 5 p.m. – 7:30 p.m. Adults - \$7 Children - \$4

October 27 – Miss Southwestern Oklahoma State
University Pageant – 7:30 p.m.

November 3 – Hobart Craft Festival

Jump
Into
Fall
Savings

Kiwash Electric Co-op offers state-to-state long distance rates for only 4.9¢* per minute, in-state rates are only 3.9¢ per minute, no minimums and no cost to join. You don't have to be a Kiwash Electric customer to sign up. Now that's something to jump into!

State-to-state only
4.9¢*
per minute

Call today!
1-877-859-3033

KEC

*Rates are state-to-state, long distance only. Domestic rates apply. International rates are not available. ©2008 Kiwash Electric Cooperative. All rights reserved. *Per minute.

KILOWATT

To report the events in your community, or for more information, call Kiwash Electric Cooperative.
1-888-832-3362